



EPSON OPOS ADK

Installation Guide

Version 3.00 Nov. 2021

Notes

- (1) Reproduction of any part of this documentation by any means is prohibited.
- (2) The contents of this documentation are subject to change without notice.
- (3) Comments and notification of any mistakes in this documentation are gratefully accepted.
- (4) This software cannot be used with other equipment that the specified.
- (5) EPSON will not be responsible for any consequences resulting from the use of any information in this documentation.

Trademarks

Microsoft®, Windows®, Windows Server®, Visual Basic® and Visual C++® are trademarks or registered trademarks of Microsoft Corporation in the United States and/or other countries.

EPSON® and ESC/POS® are registered trademarks of Seiko Epson Corporation.

Other product and company names used herein are for identification purposes only and may be trademarks or registered trademarks of their respective companies.

The Bluetooth® word mark and logos are registered trademarks owned by Bluetooth SIG, Inc. and any use of such marks by Seiko Epson is under license. Other trademarks and trade names are those of their respective owners.

Copyright (c) 2019-2021 Seiko Epson Corporation

Contents

Chapter 1 Introduction	1
Chapter 2 Caution.....	2
Chapter 3 Installation	3
3.1 Configure your communication environment.....	3
3.2 Introduction	4
3.3 License Agreement.....	5
3.4 Selecting Components to Install	6
3.5 Pre-Installation Summary	7
Chapter 4 Uninstalling	8
4.1 Changing Installed Items and Starting Uninstall	8
4.2 Confirm uninstallation	8
4.3 Delete Electronic Journal data files	8
Chapter 5 Silent Installation/Uninstallation.....	9
5.1 Running Installation	9
5.1.1 <i>Configure communication environment for silent installation.....</i>	<i>9</i>
5.2 Running Uninstallation.....	9
Chapter 6 Copy Installation.....	10
6.1 Collect Main PC Setting Information	10
6.2 Register Setting Information on Target PC	10
6.3 Restrictions on Copy installation	11

Chapter 1 Introduction

The following hardware and software configuration is required when installing EPSON OPOS ADK.

- Computer
 - IBM PC/AT compatible
 - Please follow the specifications recommended by your OS for system requirements (CPU, RAM, etc.).

- Supported Operating systems
 - See ReleaseNotes.

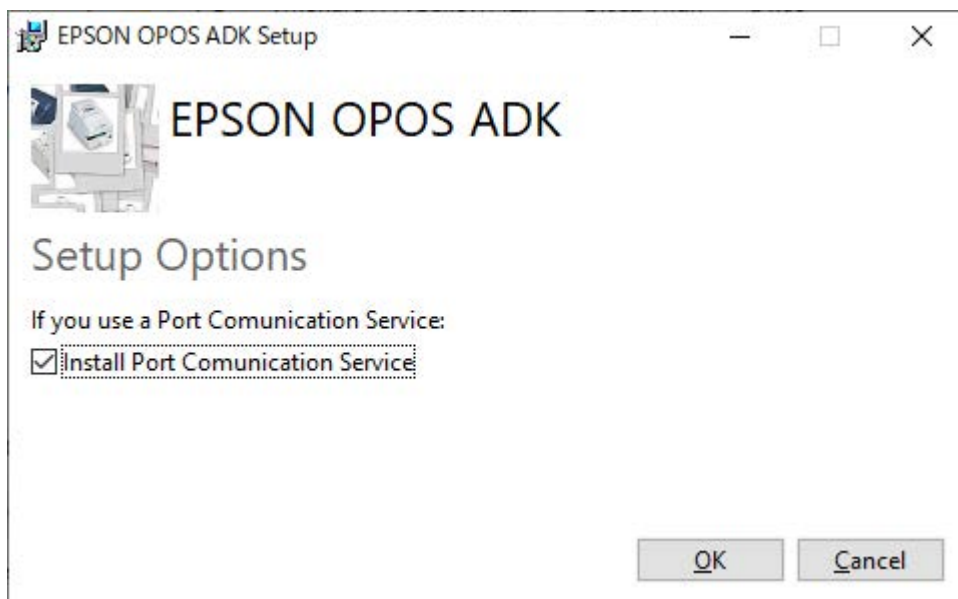
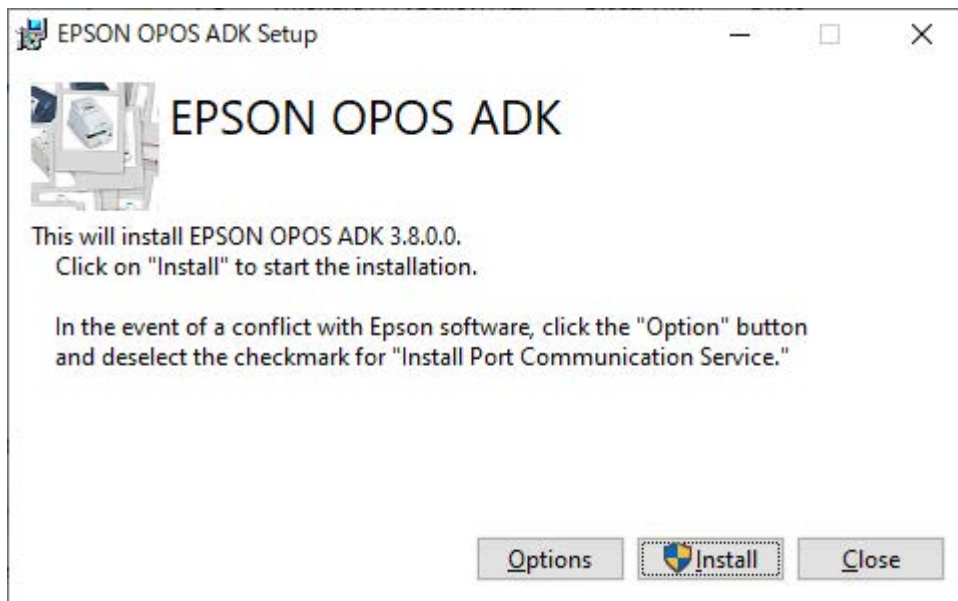
Chapter 2 Caution

1. In case it is already installed OPOS 2.80 or previous version, uninstall it first before installing OPOS 3.00 or later.
2. Please connect a printer after installing OPOS driver.

Chapter 3 Installation

3.1 Configure your communication environment

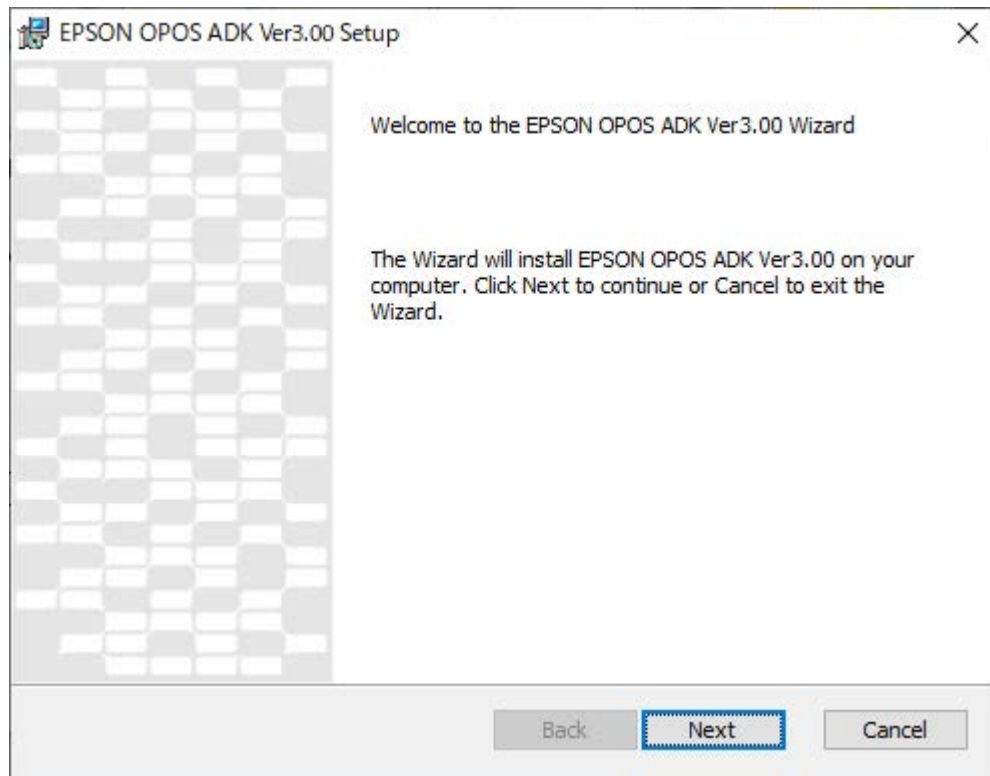
In case using the environment coexisting with Epson software, enable “Install Port Communication Service” from “Options”.



3.2 Introduction

Following window screen is Setup Wizard of OPOS ADK.

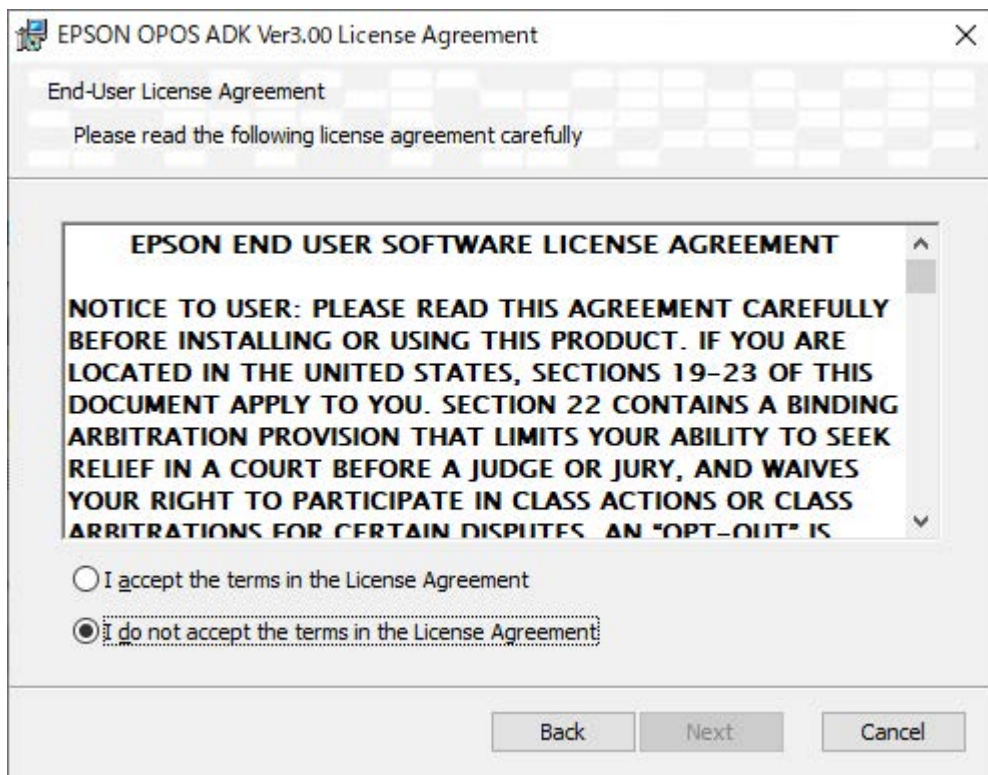
Click "Next" to continue installing the software.



3.3 License Agreement

The user must agree to the License Agreement to continue with the installation. After reading the entire agreement, select “I accept the terms of the License Agreement” and then click “Next”.

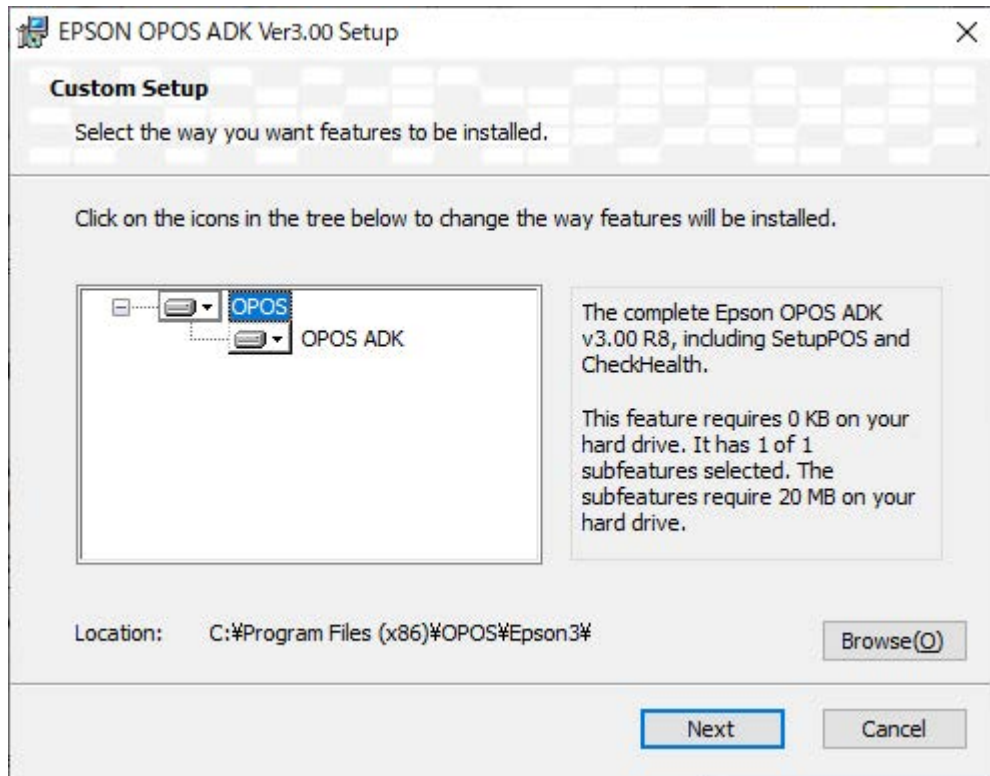
If “I accept the terms of the License Agreement” is not selected, “Next” is not enabled.



3.4 Selecting Components to Install

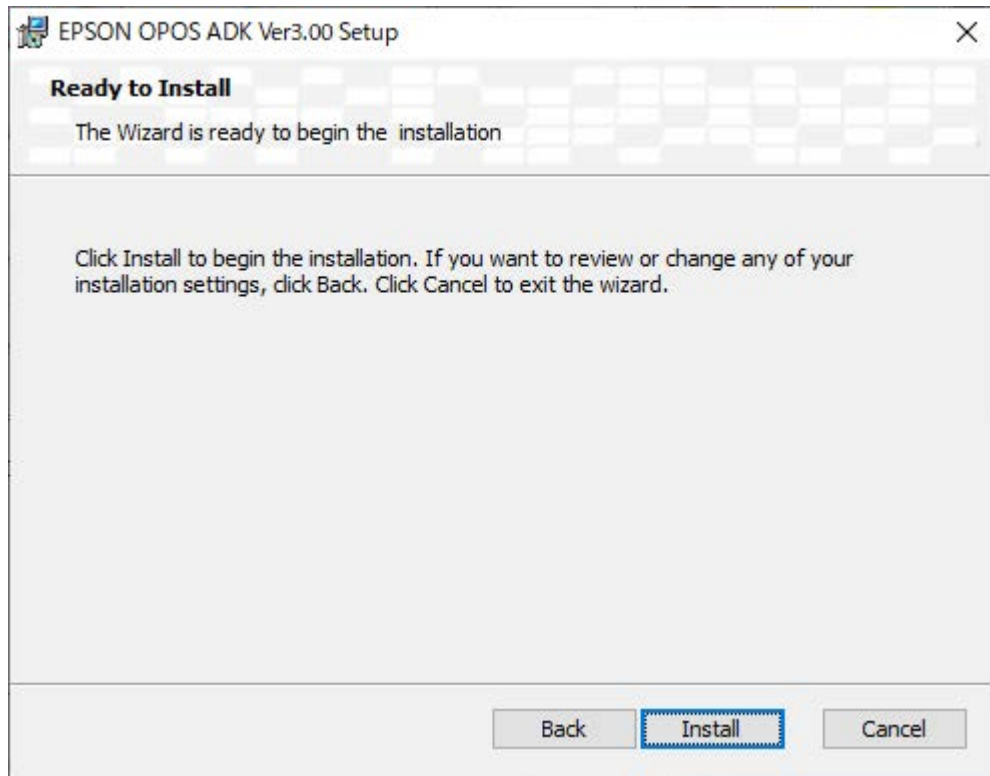
Select the components to install and click “Next”.

Choose “OPOS ADK” at least.



3.5 Pre-Installation Summary

The following window screen is the confirmation message before installation. If the settings are correct, click “Install”.



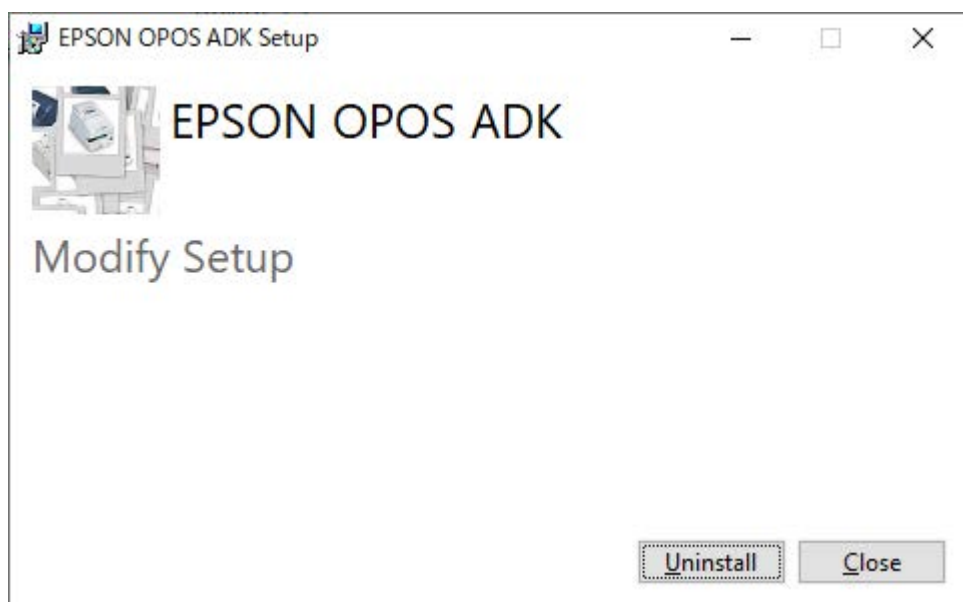
Chapter 4 Uninstalling

4.1 Changing Installed Items and Starting Uninstall

Double-click the Add or Remove Programs icon in Control Panel, and click Change or Remove for EPSON OPOS ADK 3.00 or later.

4.2 Confirm uninstallation

Click "Uninstall" to start uninstalling.



4.3 Delete Electronic Journal data files

The uninstaller does not remove data files created for the Electronic Journal. If these files have been created, they must be deleted manually.

Chapter 5 Silent Installation/Uninstallation

5.1 Running Installation

Using the command prompt, append option to the installer file and run it.

Example:

```
EPSON_OPOS_V3.00ER8.exe /q Installdirx86="C:\ProgramFiles (x86)\OPOS\EPSON3"
```

5.1.1 Configure communication environment for silent installation

If you add the command of [InstallPCS], you can set the same as [\[Configure your communication environment\]](#).

0:Not install module.

1:Install module.

Example:

```
EPSON_OPOS_V3.00ER8.exe /q InstallPCS="0"
```

5.2 Running Uninstallation

Using the command prompt, append option to the uninstaller file and run it.

Example:

```
EPSON_OPOS_V3.00ER8.exe /uninstall /quiet
```

Chapter 6 Copy Installation

EPSON OPOS ADK supports a copy installation function that deploys a same environment created on one PC to another PC.

Hereinafter, the source PC is referred as the "main PC" and the destination PC is referred as the "target PC".

6.1 Collect Main PC Setting Information

- ① After installing EPSON OPOS ADK on the main PC, use the SetupPOS utility to configure various information and devices.
- ② Start a command prompt with Administrator privileges and move to the "EPSON OPOS ADK" installation directory.
- ③ Execute the information acquisition batch file(CollectCopyInstallModules.bat). This batch file in the same directory where "EPSON OPOS ADK" is installed.
Ex) "C:\Program Files\EPOS\Epson3\CollectCopyInstallModules.bat"
When executed batch file , the [EpsonCopyInstallModules] folder is created in the same hierarchy, and the following information is stored.
 - Registry information registered with the SetupPOS utility (OPOS.reg)
 - Port information file (pcs.properties)
- ④ Move the files created in ③ to the target PC.

6.2 Register Setting Information on Target PC

- ① Install EPSON OPOS ADK on the target PC.
- ② Perform the following operations on the acquired file..
 - Move the port configuration file (pcs.properties) to
<(system drive): \ProgramData \ EPSON \ portcommunicationservice>.
 - Start a command prompt with Administrator privileges and execute the registry information file(OPOS.reg)
 - After confirming the contents of the displayed dialog, select "Yes".
- ③ Connect the equipment after turned it on the power, start the SetupPOS utility, and confirm that the setting information set on the main PC is registered correctly.

6.3 Restrictions on Copy installation

- Supports copy installation only if the EPSON OPOS ADK versions on the “main PC” and the “target PC” are the same.

	“Main PC”	“Target PC”	Result
Example:1	Version 2.80 ER12	Version 3.00 ER8	Not Support
Example:2	Version 3.00 ER7	Version 3.00 ER8	Not Support
Example:3	Version 3.00 ER8	Version 3.00 JR8	Not Support
Example:4	Version 3.00 JR8	Version 3.00 ER8	Not Support
Example:5	Version 3.00 ER8	Version 3.00 ER8	Support

- The copy installation function cannot be used if there are the following differences in the environment.
 - When the main PC and the target PC have different system drives
(ex: Main PC is C drive, target PC is D drive)
 - When the physical port configuration is different
(ex: Main PC has COM1 and COM2, target PC has only COM1)
 - When the OS is different
(ex: Main PC is 32bit OS, target PC is 64bit OS)
- Before executing the copy installation function, close all applications that use EPSON OPOS ADK.
- Do not connect an EPSON device to your PC when performing the procedures for acquiring and reflecting copy installation information.